

PART OF SECTION 10, T.6N., R.1E., S.L.B. & M.
SPURLOCK SUBDIVISION PLAT 1

LOTS 1 - 5 AND 16 - 23

IN WEBER COUNTY

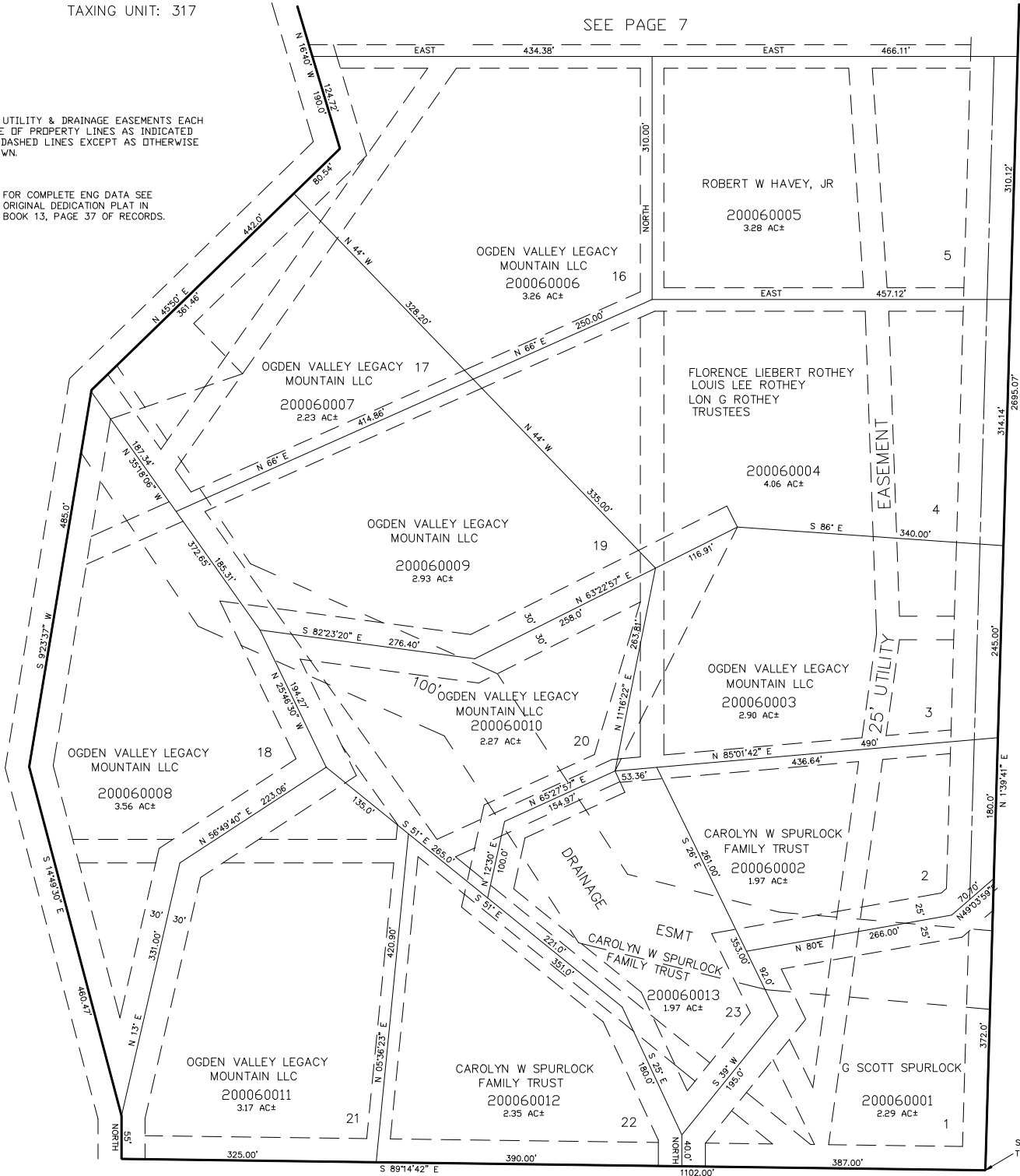
SCALE 1" = 100'

TAXING UNIT: 317

SEE PAGE 7

30' UTILITY & DRAINAGE EASEMENTS EACH
 SIDE OF PROPERTY LINES AS INDICATED
 BY DASHED LINES EXCEPT AS OTHERWISE
 SHOWN.

FOR COMPLETE ENG DATA SEE
 ORIGINAL DEDICATION PLAT IN
 BOOK 13, PAGE 37 OF RECORDS.



S. 1/4 COR. SEC. 10,
 T.6N., R.1E., S.L.B. & M.

SEE PAGE 5

SEE PAGE 5-1